

# Pinetop Lakeside Inclusive Playground

A UNIVERSALLY ACCESSIBLE PLAYGROUND PROJECT



## SPONSORSHIP OPPORTUNITIES



BROUGHT TO YOU BY:



**Blue Ridge Student Foundation, Inc.**

Where **limitations** are forgotten, and **differences** are celebrated



## Why do Playgrounds Matter?

Play is a critical part of the social, emotional, cognitive, and physical development of every child. Unfortunately, the vast majority of playgrounds deny children with disabilities and critical illnesses the opportunity for exercise, entertainment, and social interactions which other children enjoy. In fact, only a small percentage of fully accessible playgrounds exist within our nation and these are insufficient to serve 43 million Americans with disabilities.

An **Inclusive Playground** is specifically designed to remove physical and social barriers so ALL children, with and without disabilities and/or critical illnesses, can play side by side with their peers and families.

**To be located at the  
Mountain Meadow Park.**

**The Pinetop Lakeside Inclusive Playground will be an Unlimited Play inclusive playground — a place where limitations will be forgotten and differences are celebrated!**

## The Vision

The Pinetop Lakeside Inclusive playground committee is a partnership between Blue Ridge Student Foundation and Pinetop Lakeside Public Works to create a playground where every child, no matter their ability, can laugh, explore, and play freely.

A playground that invites children of all developmental stages to engage in imaginative and active play, where parents and caregivers can feel proud to bring their children, and where every visitor feels welcomed.

We are driven by the conviction that play is essential for every child. It fosters creativity, builds friendships, and teaches valuable life skills.

It's time for a new vision. We are building a fully inclusive playground, a place where every swing, slide, and structure is designed with accessibility in mind.

There will be quiet spaces for children who need a break from the noise, areas that encourage social play between children of different abilities, and innovative equipment that sparks joy, imagination and adventure for all.

But we can't do it alone.

This playground is more than a project—it's a symbol of who we are as a community. A community that cares, that comes together in times of need, and that strives to lift each other up. With your support, we can make this dream a reality. Together, we can create a space where every child can feel the freedom of play, where every family can belong, and where Pinetop Lakeside shines as a beacon of inclusivity.

Join us in bringing this vision to life.

Together, we will create a playground that reflects the heart of Pinetop Lakeside—a place where everyone belongs, where every child is celebrated, and where our community's spirit thrives.



## YOUR COMMUNITY'S Unlimited Play Playground

- Safe, smooth, spongy surfacing
- Ramps from bottom to top
- Transfer stations throughout
- Specialized seating and handholds
- Slanted/graduated climbing elements
- High back swings
- Generation Swing
- Picnic Shelter and Shade
- Roller and molded slides
- Imagiative Play
- Parallel play
- Quiet Area
- Fun, educational play panels
- Colorful Nature Theme
- Quiet Grove
- Accessible Play Panels

Join us in the efforts to build this universally accessible playground.  
 Your generous support will enable ALL children and caregivers of all abilities the opportunity to experience the joys and benefits of play.  
 This destination playground will truly impact our community far beyond the playground.

“PLAYGROUNDS  
 MAKE ME FEEL  
 POWERFUL.”

Brendan, Age 10



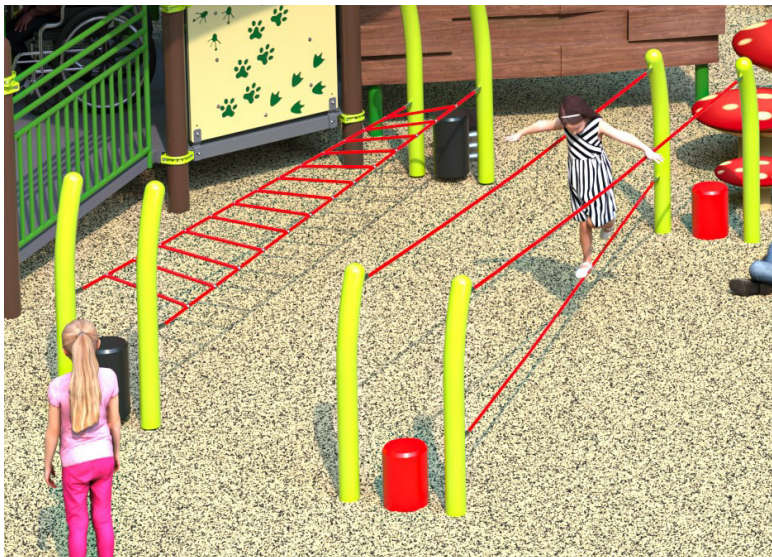
**Lady Bug Spring Rider**  
**\$2,800.00**



**Grasshopper Spring Rider**  
**\$3,000.00**



**Quiet Grove**  
**\$14,000.00**



**Grand Canyon Rope Course**  
**\$20,500.00**



**Triple Hoop**  
**\$2,800.00**



**Theater Panel**  
**\$3,000.00**



**Ticket Booth Panel**  
**\$3,000.00**



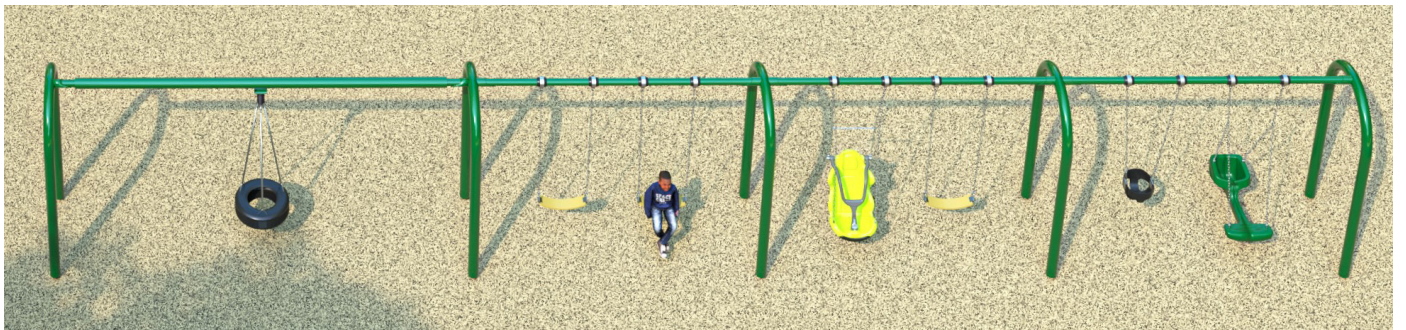
**Sign Language Panel**  
**\$2,500.00**



**Surface Spinner**  
**Merry-Go-Round**  
**\$21,000.00**



**Raft Swing** **\$13,000.00**



**Swing Set Includes a Generation Swing, Tire Swing and Inclusive Swing**  
**\$18,000.00**

# Sponsorship Opportunity!



**Sculpted Frog Climber**  
**\$15,000.00**



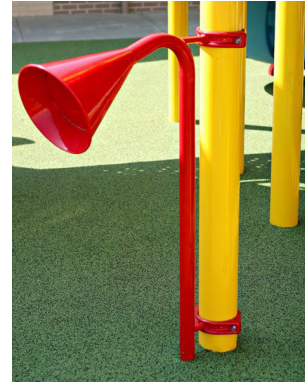
**Stacked Timber Climb**  
**\$14,000.00**



**Inchworm Climber**  
**Panel \$7,800.00**



**Hang out seats**  
**\$2,500.00**



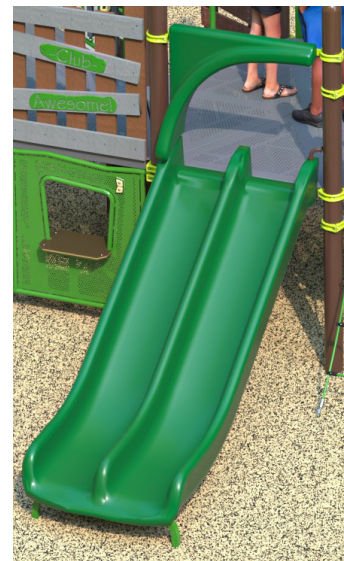
**Talk Tube \$1,700.00**



**Split Log Climber**  
**\$5,500.00**

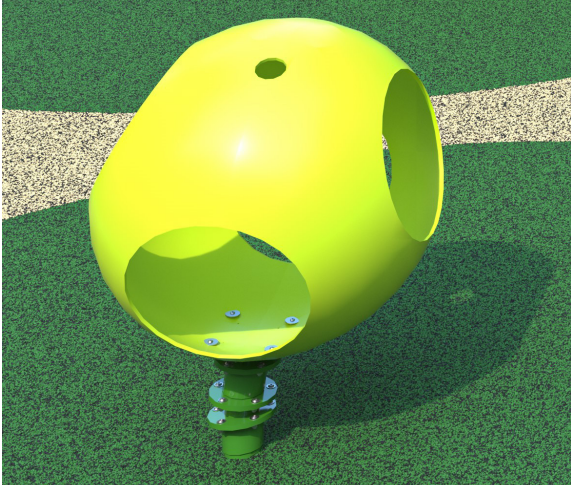


**Market Stand**  
**\$14,500.00**

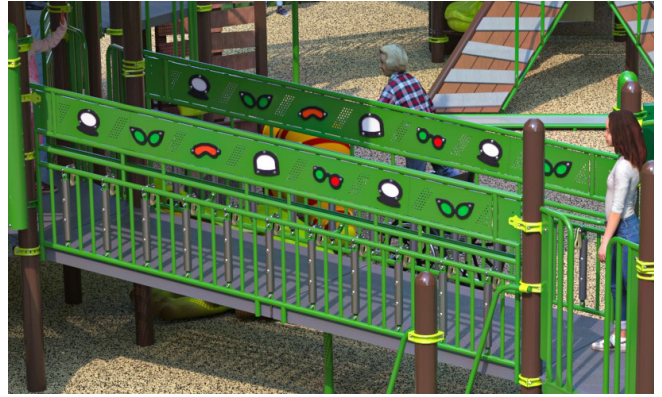


**Double Slide**  
**\$4,000.00**

# Sponsorship Opportunity!



**Wobble Sphere \$6,500.00**



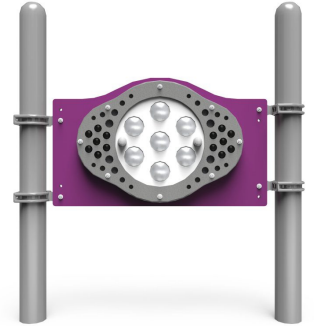
**Sensory Safety Rails  
\$12,000.00 each set ~ 3 sets available**



**Mushroom Climbers  
\$12,000.00**



**Silly Face Panel  
\$3,000.00**



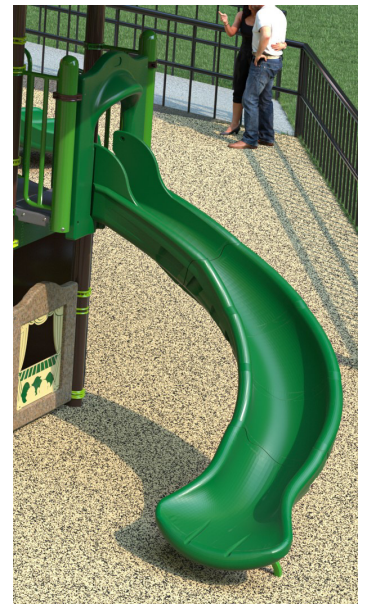
**Disco Party Panel  
\$3,500.00**



**Roller slide  
\$14,000.00**



**Blue Butterfly Climber  
\$10,500.00**



**Green Curved Slide  
\$7,000.00**

# Sponsorship Opportunity!



**Communication Sign \$2,400.00**



**Log Roll \$3,300.00**



**Clatter Bridge \$8,300.00**



**Quantum Slide ~ Two available  
\$6,500.00 each**



**Theater Play Station \$23,000.00**



From individuals making donations, businesses sponsoring playground equipment, corporations contributing grants and volunteers offering gifts of time, we welcome your involvement.

## Here's How You Can Help

- Make a monetary donation using the form on the back of this booklet.
- Donate your time to a fundraising event or Community Build Day. Complete and mail the contact information on the back of this booklet to be contacted about upcoming volunteer opportunities.
- Donate goods/services such as concrete, fencing, shrubs, etc. Complete and mail the contact information on the back of this booklet, noting what goods/services you would like to donate.



**Blue Ridge Student Foundation, Inc.**



**The Weather Station**  
**\$4,800.00**

## **Pinetop-Lakeside Inclusive Playground**

**TOGETHER WE CAN  
CREATE YOUR  
DESTINATION  
PLAYGROUND  
WHERE WE ALL CAN  
PLAY!**



**Braille Play Panel**  
**\$1,800.00**



## Who is Unlimited Play?

Unlimited Play is an award winning nonprofit organization that builds universally inclusive playgrounds to promote health and wellness and change communities by providing freedom of play for ALL children. The transformational power of an inclusive playground brings kids and adults of all abilities together to play and learn from each other.

Unlimited Play is a 501(c)3 non-profit organization that helps to plan, design and build fully accessible playgrounds. Unlimited Play playgrounds allow all children – regardless of their abilities – to play together. A valuable resource in our community, Unlimited Play has unique expertise in this area and is available to assist in the development of inclusive playgrounds that promote dignity, understanding and respect among children. In 2016 Little Tikes Commercial and Unlimited Play announced a partnership to help provide the magic of outdoor play to children of all abilities.



New Partners in Inclusive Play

## Step 1: Complete Donor/Volunteer Information: (please print)

Name: \_\_\_\_\_

Company/Organization (if applies): \_\_\_\_\_

Address: \_\_\_\_\_

City: \_\_\_\_\_

Phone: (        ) \_\_\_\_\_ - \_\_\_\_\_ E-mail: \_\_\_\_\_ State: \_\_\_\_\_

## Step 2: Choose Your Donation

### Equipment Sponsorship

Please note that item quantities are limited and may no longer be available. Unlimited Play will confirm sponsorship upon receipt of both this application and the gift amount. Equipment may not be identical to photos in this catalog (color variance, etc.) Sign size and color may vary and be placed either on or near the piece of equipment in compliance with safety standards.

SELECT EQUIPMENT ITEM FROM THIS CATALOG: \_\_\_\_\_

## Step 3: Send a Donation

PAYMENT METHOD  Check  Pay Online by scanning the QR Code.

Please make checks payable to: Unlimited Play Playgrounds - Pinetop Lakeside Inclusive Playground  
5988 Mid Rivers Mall Drive Suite 230  
St. Peters, MO 63304



Scan to learn more  
and make a  
donation online



Any questions please contact:

Andrea Woolridge - 123jez@gmail.com  
Julie Hoffman - julie@unlimitedplay.org  
Johnny Walker - 79jeppujw@gmail.com



YOUR COMMUNITY'S  
**Unlimited Play Playground**

