



TREEHOUSE

COMMUNITY PLAYGROUND

INCLUSIVE PLAY FOR ALL.

BROUGHT TO YOU BY:





Why Is NorthBridge building an all-inclusive playground for the community?

Play is critical for a child's development. It builds imagination, enhances independence, promotes physical activity, fosters healthy brain development and eases anxiety. Playgrounds are designed specifically for kids, but not all kids. Rarely will you find children with disabilities able to enjoy the local playground equipment. Why not? Because it's not designed nor accessible for them. They may not be able to climb stairs to enjoy the thrill of a slide, use a typical swing, nor jump on to the merry-go-round.

We're going to change that in Antioch, but we can't do it without you!

NorthBridge Church is partnering with the national experts, Unlimited Play, to design and build **Antioch's first inclusive playground for the community.**

This playground will enable all children – regardless of their abilities – to play together, side by side. It will also allow parents and caregivers with disabilities to play with their children.

How does this benefit the community?

In Antioch, statistically 1 in 10 people have a disability. And yet, there are no playgrounds here that welcome everyone equally. Building an inclusive playground in our community will help break down barriers and bring people and families together. Inclusive play brings together children of all abilities, creating a sense of community where all children feel nurtured, valued, encouraged and respected. And research shows that communities thrive when their children thrive.





CUSTOM PRODUCTS ARE SHOWN AS CONCEPTUAL.

**A UNIQUELY
DESIGNED
PLAYGROUND
FOR CHILDREN
WITH AND
WITHOUT
DISABILITIES.**

This community playground features:

- Safe, smooth, solid surfacing ideal for those with mobility devices
- Ramp access to all levels of the playground
- Transfer decks throughout
- Specialized seating and handholds
- Modified swing for children of all abilities
- Quiet space for sensory needs
- Musical elements
- Communication, sensory and play panels
- And much more!

"I can do anything!"



MEET JAYDEN AKA JJ

JJ is a very happy and energetic 10-year-old who loves outdoor play. As a child with autism JJ walks on his toes. An inclusive playground will offer JJ the safety, handholds and options to not only be imaginative and enjoy all the equipment, but to also play alongside children without disabilities and make new friends.

MEET VERONICA

Veronica is a very active 6-year-old who loves playing outside and trying new things. A huge smile greets all she meets as does her confidence and "I can do anything" attitude. Veronica never lets her small size get in the way of climbing and reaching for the highest point. Being able to have an inclusive playground that provides the accommodations she and her friends need will give them a chance to actively play together, use their imaginations, meet new friends, and build physical strength – something very important for children with Down syndrome.



Give the Gift of Play!

GIFTING

Gifting is a monetary donation toward general playground funding, providing items such as solid surfacing, concrete, ramping, playground equipment, etc.

Gifting members' names will be specially displayed within the playground.

SCALE LEVELS

Treehouse Level \$50,000+

Bridge Level \$25,000-\$49,999

Riverbed Level \$15,000-\$24,999

Meadow Level \$10,000-\$14,999

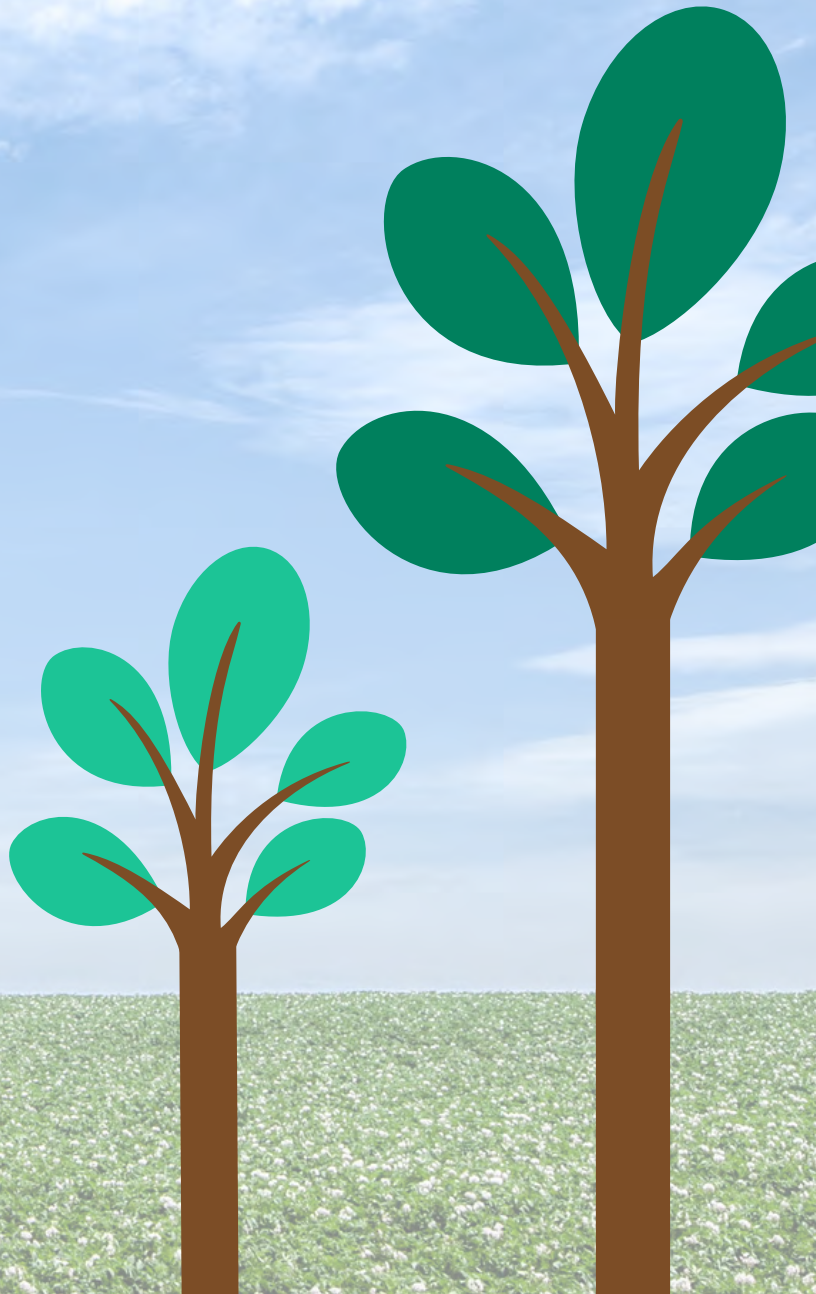
Rainbow Level \$5,000-\$9,999

Sunshine Level \$1,000-\$4,999

Flower Level \$500-\$999

Butterfly Level \$250 - \$499

For donation level details, see the sponsorship insert. Your donation is fully tax deductible!



Join us in the efforts to build this accessible community playground.

Your generous support will enable ALL children and caregivers of all abilities the opportunity to experience the joys and benefits of play. This destination playground will truly impact thousands of people each year.

WAYS TO SUPPORT THE INCLUSIVE PLAYGROUND

- Make a gift
- Become a sponsor
- Underwrite a piece of equipment
- Make an in-kind donation
- Check with your company to see if they will match your gift
- Hold a fundraiser
- Make the donation in the name of your family or group or club
- Host a party and invite your friends and family to donate in honor of someone you love with special needs or disabilities
- Remember this community inclusive playground in your will



Racing Slides



Silly Face Reach Panel



Chatterery



Spinner



Roller Slide



Climbing Stump

TOGETHER, WE CAN CREATE A DESTINATION PLAYGROUND FOR OUR COMMUNITY.

From individuals making donations, businesses sponsoring playground equipment, corporations contributing grants and volunteers offering gifts of time, we welcome your involvement.



Quiet Grove



Swings



Silly Tree



Tall Chimes



Congas



Concerto Vibes



Glider



Braille Clock



Sign Language Board

SPONSORSHIP

Treehouse Level \$50,000 +

Top billing on the invitation and pamphlet for the Grand Opening event and on signage at the playground; invitation to speak at the event; top billing on the website landing page, social media, press releases, and Grand Opening volunteer t-shirts. Invitations for 50 friends and family to attend a VIP reception.

Bridge Level \$25,000-\$49,999

Prominent listing on the invitation and pamphlet for the Grand Opening event, and on signage at the playground; invitation to speak at the event; prominent listing on the website landing page, social media, press releases, and Grand Opening volunteer t-shirts. Invitations for 25 friends and family to attend a VIP reception.

Riverbed Level \$15,000-\$24,999

Prominent listing on the invitation and pamphlet for the Grand Opening event, and on signage at the playground; verbal acknowledgement at the event; prominent listing on the website landing page, social media, press releases, and Grand Opening volunteer t-shirts. Invitations for 15 friends and family to attend a VIP reception.

Meadow Level \$10,000-\$14,999

Recognition on the invitation and pamphlet for the Grand Opening event, and on signage at the playground; listing on the website landing page, social media, press releases, and Grand Opening volunteer t-shirts. Invitations for 10 friends and family to attend the Grand Opening Celebration.

Rainbow Level \$5,000-\$9,999

Recognition on the invitation and pamphlet for the Grand Opening event, and on signage at the playground. Invitations for 5 friends and family to attend the Grand Opening Celebration.

Sunshine Level \$1,000-\$4,999

Recognition in the Grand Opening pamphlet, and on sponsor signage at the playground. Invitation for 2 to attend the Grand Opening Celebration.

Flower Level \$500-\$999

Recognition in the Grand Opening pamphlet, and on sponsor signage at the playground.

Butterfly Level \$250 - \$499

Recognition at the playground.

WHY BECOME A CORPORATE SPONSOR?

- Foster goodwill within the company and community
- Create a positive visibility to customers
- Incorporate values of diversity, equity, and inclusion (DEI)
- Maintain a corporate presence in the community

Join the team in making this dream a reality for hundreds of families in our area.

Donation/Sponsorship Form

CONTACT INFORMATION (please print)

First and Last Name _____

Organization/Company (if applicable) _____

Address _____

City _____ State _____ Zip Code _____

Cell or Primary Phone _____

E-mail _____

SPONSORSHIP BY LEVEL

I would like to choose the following Sponsorship Level (see front of this form)

EQUIPMENT SPONSORSHIP

I am interested in underwriting a piece of equipment. Please contact me.

OTHER FORM OF GIFT

All gifts are truly appreciated. Let us know how you plan to support this effort.

PLAYGROUND PRESENTATION

Representatives from our team would be happy to share a presentation with your group or organization.

PAYMENT METHOD**

CREDIT CARD

Name on Credit Card _____

Credit Card Number _____ EXP DATE _____ CCV _____

Amount to Charge _____

CHECK

Please make checks payable to:

NorthBridge Church
18724 W. IL Rt 173, Antioch, IL 60002
Please write "Playground" in Memo line

OR

Unlimited Play
5988 Mid Rivers Mall Dr, St. Peters, MO 63304
Please write "Northbridge" in Memo line

CONTRIBUTE ONLINE

northbridgechurch.org/give
(select 'Inclusive Playground')

OR

unlimitedplay.org/playground/northbridge-church-inclusive-playground/

SCAN



TO GIVE ONLINE

Choose the "Inclusive Playground" option from the Fund drop down menu.

**** Your donation is fully tax deductible****



NorthBridge

CHURCH

18724 W. 173 Antioch IL 60002 | 847.838.0800 | NorthBridgeChurch.org