

# WOLF PACK PARK

Created For Our Community By Reeds Spring Schools and Caring Community Sponsors



BROUGHT  
TO YOU BY:



Where **limitations** are  
**forgotten**, and **differences**  
are **celebrated**

# WOLF PACK PARK

A multi-purpose community park where everyone of every ability, interest and age can come together to do what makes them happy. Here is a look at all Wolf Pack Park will offer!



Our vision is to create a park that will unite families and create a new space within our community which is welcoming and inclusive for everyone, regardless of their ability. A place where friends and family gather to enjoy recreational activities and connect with nature's beauty. Facilities will be accessible and accommodating for all, including an Unlimited Play 21-piece ADA-accessible playground, six tennis courts, four pickleball courts, half basketball court, hiking trails, biking trails, an 18-hole disc golf course and multi-purpose pavilion area. Wolf Pack Park will foster community spirit and encourage active lifestyles through these public recreational opportunities which will be unlike any facility ever created in Stone County. Reeds Spring School District is the hub for multiple communities throughout Stone County and Southwest Missouri to come together for outside recreational activities.



# WHAT YOU CAN FIND AT WOLF PACK PARK



Tennis Courts

Tennis courts can be enjoyed by everyone at Wolf Pack Park for recreation as well as for tennis matches. There will be six courts available



Pickleball Courts

With pickleball sweeping the nation, it only makes sense to include this fast growing sport in our amazing park.

A basketball court will be available at Wolf Pack Park. We envision seeing pick-up games and individual practices take place here. There is fun for the whole family.



Basketball Court



Disc Golf

Another exciting feature of this park will be a disc golf course. This is a great sport that people of all ages and abilities can enjoy.



Trails

Walking trails, biking paths, and a cross country course will be included at this park to provide the community with more opportunities to get their steps in and take in the beautiful scenery.



## Alumni Pavilion and Restrooms

The pavilion at Wolf Pack Park will be a great place to gather for events, celebrations, meals, community events, or to enjoy some shade.



## Concessions

You can't have a playing field without having a concessions stand! There will be a variety of snacks available while you cheer on our Wolf Pack!

Playing fields need players, and players need seats! We can't wait to cheer on our youth sport teams!



## Player Seating



## Bleachers

There will be plenty of seating options including accessible seating to cheer on the Wolf Pack during a variety of different sports.



## Picnic Tables

There will be many picnic tables to choose from at Wolf Pack Park so that lots of people in the community can enjoy a spot to sit in this beautiful park.

We are excited to be able to share our ADA accessible playground with the community. Further information on our inclusive playground from Unlimited Play on page 5.



## Playground

# What is an inclusive playground?

An Inclusive Playground is specifically designed to remove physical and social barriers so ALL children, with and without disabilities and/or critical illnesses, can play side by side with their peers and families

## WOLF PACK PARK'S INCLUSIVE PLAYGROUND



### Your community's Unlimited Play playground features...

- Safe, smooth, spongy surfacing
- Ramps from bottom to top
- Transfer stations throughout
- Specialized seating and handholds
- Slanted/graduated climbing elements
- High back swings
- Saucer swing
- Stainless steel and molded slides
- Musical elements
- Parallel play
- Lots of shade
- Fun, educational play panels



## Who is Unlimited Play?

Unlimited Play is an award winning nonprofit organization that builds universally inclusive playgrounds to promote health and wellness and change communities by providing freedom of play for ALL children. The transformational power of an inclusive playground brings kids and adults of all abilities together to play and learn from each other.

Unlimited Play is a 501(c)3 non-profit organization that helps to plan, design, and build fully accessible playgrounds. Unlimited Play playgrounds allow all children - regardless of their abilities - to play together. A valuable resource in our community, Unlimited Play has unique expertise in this area and is available to assist in the development of inclusive playgrounds that promote dignity, understanding, and respect among children. In 2016, Little Tikes Commercial and Unlimited Play announced a partnership to help provide the magic of outdoor play to children of all abilities.



# WOLF PACK PARK



Join us in our efforts to build this universally accessible park. Your generous support will enable all members of our community, regardless of their abilities, to experience the joys and benefits of play. This park will impact 10,000+ people each year!



Rope Bridge  
\$8,000



40 Yard Zip Line  
\$30,000



Frisco Train  
\$45,000



Double Quantum Slide  
\$18,000



Bridge  
\$35,000



Zoom Twist  
\$15,000



Quiet Grove  
\$15,000



Treehouse  
\$50,000



Inclusive Rocker  
\$30,000





Hill Slide  
\$12,000



Roller Slide  
\$15,000



Tikes Peak  
\$12,000



Disc Swing  
\$10,000



Lumber Jack Climber  
\$5,000



Sensory Panel  
\$5,000



Playful Railing  
\$5,000



Musical Xylophone  
\$5,000



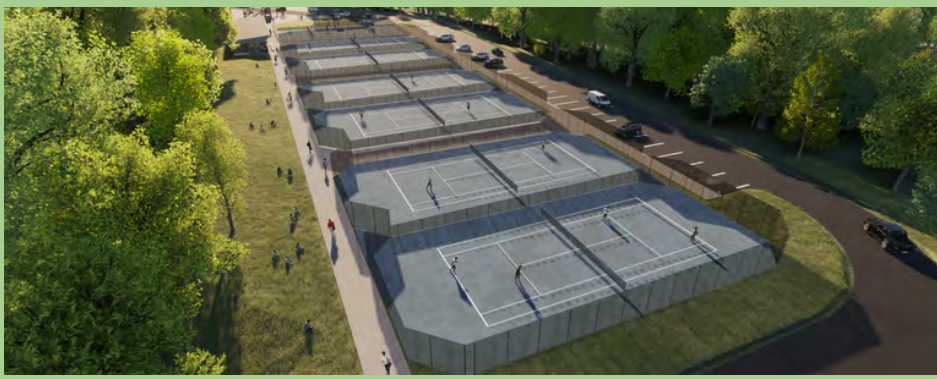
Scrabble Scales  
Panel  
\$5,000



Disco Party  
Panel  
\$5,000



Silly Faces Reach  
Panel  
\$5,000



Tennis Courts  
\$887,216



Pavilion with Concessions  
& Restrooms  
\$1,180,003



Pickleball Courts  
\$218,912



Half – Court Basketball  
\$54,728



Bike Path  
\$200,000



Bleachers (2)  
\$30,000



Trails  
\$200,000



Dedication Park Benches  
with Personalized  
Dedication Plaque  
\$5,000 each



Player Seating  
\$36,000



Picnic Tables (11)  
\$5,000

# WAYS TO CONTRIBUTE

## CORPORATE SPONSORSHIP

Your company can directly help our community by sponsoring equipment and areas of the park

## LEGACY SUPPORT

Individual sponsorships, foundations, and/or grants can benefit this community project and further help our community flourish

## FUNDRAISING EVENT

Fundraisers through different community outlets can help our member of the community contribute to this project

## DONATION OF GOODS/ SERVICES

Donations from local business to provide different donations such as shrubs, concrete, fencing, etc

## DONOR WALL SPONSORSHIP

Leave a legacy! Put your name on our park. Donor wall sponsorships are \$200

## EQUIPMENT SPONSORSHIP

Sponsor our playground equipment. Prices for equipment sponsorships on pages 6 & 7. To sponsor equipment please fill out equipment sponsorship form on the following page

Thank you for your support in helping build Reeds Spring's future. We are excited to bring a space for inclusion, accessibility, and opportunity to our community.

# SPONSORSHIP FORM

For Additional Information Regarding Wolf Pack Park Naming Rights and Additional Sponsorship Questions, Please Contact

Cy Bortner  
Community Sponsorship Coordinator  
cbortner@wolves.k12.mo.us  
w - 417-272-8173 ext. 4013  
c - 417-294-7528

## Step 1: Complete Donor/Volunteer Information: (please print)

Name: \_\_\_\_\_  
Company/Organization (if applies): \_\_\_\_\_  
Address: \_\_\_\_\_  
City: \_\_\_\_\_ State: \_\_\_\_\_ Zip: \_\_\_\_\_  
Phone: (\_\_\_\_) \_\_\_\_\_ - \_\_\_\_\_ E-mail: \_\_\_\_\_

## Step 2: Choose Your Way To Contribute

- CORPORATE SPONSORSHIP
- LEGACY SPONSORSHIP
- FUNDRAISING EVENT
- DONATION OF GOODS/SERVICES
- DONOR WALL SPONSORSHIP
- EQUIPMENT SPONSORSHIP

SELECT EQUIPMANT ITEM FROM THIS CATALOG: \_\_\_\_\_

## Step 3: Payment

- I AM INTERESTED IN SPONSORSHIP THROUGHOUT A PERIOD OF FIVE YEARS

Unlimited Play is a 501 (c)3 non-profit organization, which makes your donation tax deductible

Pay Online at [www.unlimitedplay.org](http://www.unlimitedplay.org) by scanning the QR code below

OR

Please make checks payable to:  
Unlimited Play, 5988 Mid Rivers Mall Dr., St. Charles, MO 63304  
Please write Wolf Pack Park in memo line

Any questions, please contact: (636) 757-3978  
E-mail: [natalie@unlimitedplay.org](mailto:natalie@unlimitedplay.org) • [www.unlimitedplay.org](http://www.unlimitedplay.org)

